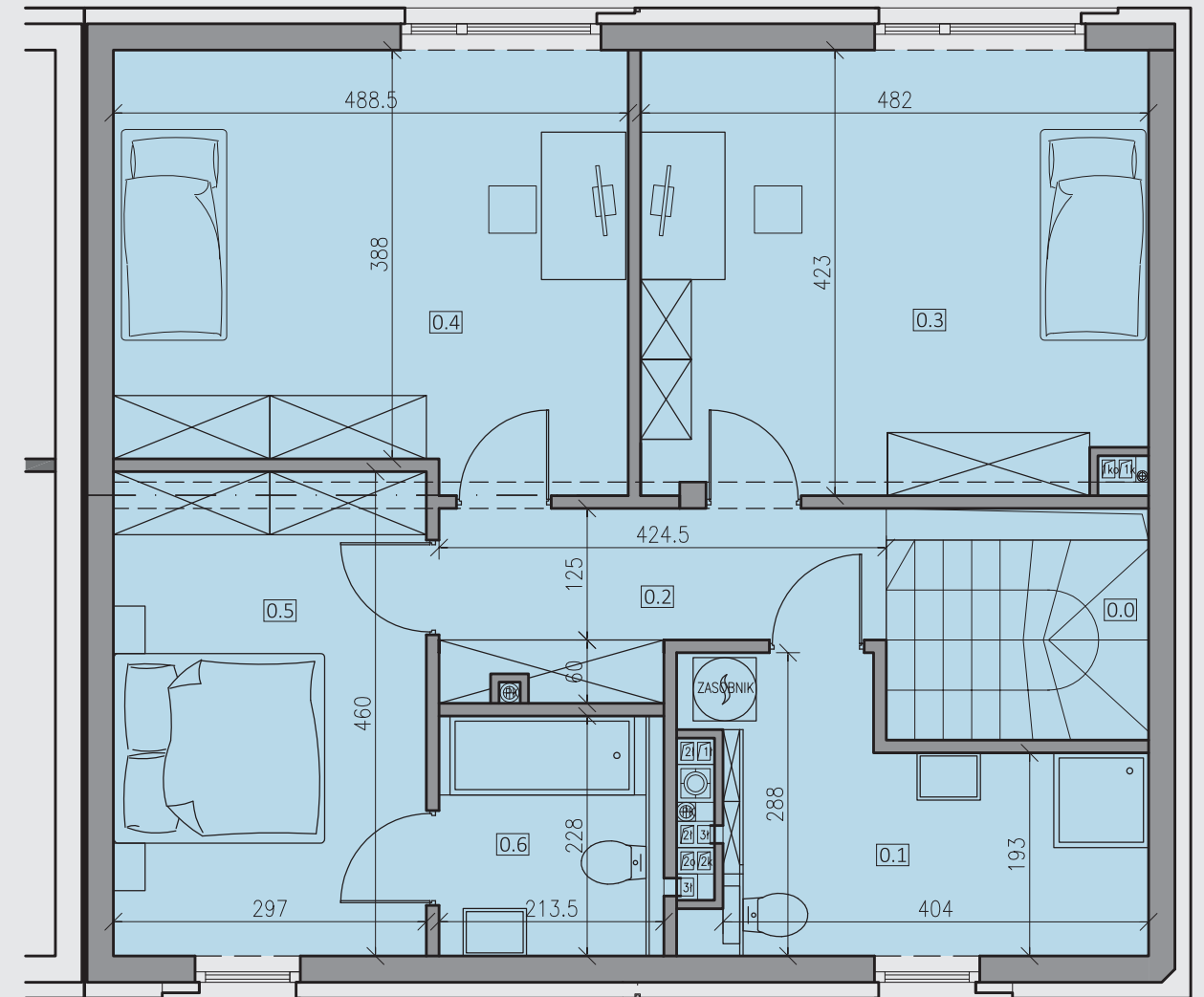


PIĘTRO - B4.M8.DP

| | | |
|-----|-------------|----------------------|
| 0.0 | schody | 10,08 m ² |
| 0.1 | łazienka | 1,53 m ² |
| 0.2 | holl | 4,20 m ² |
| 0.3 | pok.dzienny | 24,76 m ² |
| 0.4 | kuchnia | 7,90 m ² |
| 0.5 | garderoba | 1,74 m ² |
| | balkon | 6,55 m ² |

pow. DP **50,21 m²**

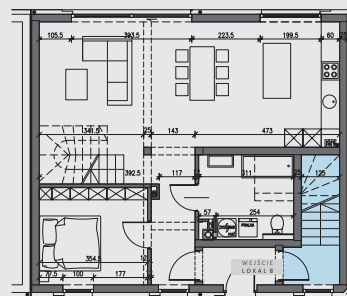


PODDASZE - B4.M8.GP

| | | |
|-----|-----------|----------------------|
| 0.0 | schody | 2,27 m ² |
| 0.1 | łazienka | 9,43 m ² |
| 0.2 | holl | 6,29 m ² |
| 0.3 | sypialnia | 19,83 m ² |
| 0.4 | sypialnia | 19,27 m ² |
| 0.5 | sypialnia | 13,43 m ² |
| 0.6 | łazienka | 4,73 m ² |

pow. GP **75,25 m²**

B4.M8. /pow. DP+GP/ **125,46 m²**



RZUT PARTERU

