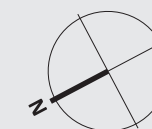
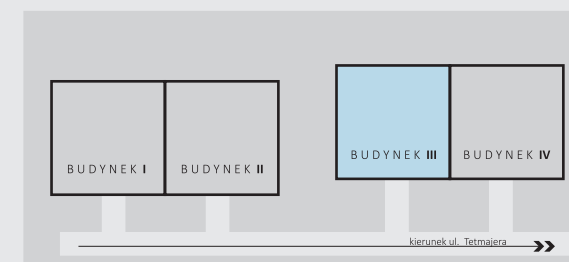
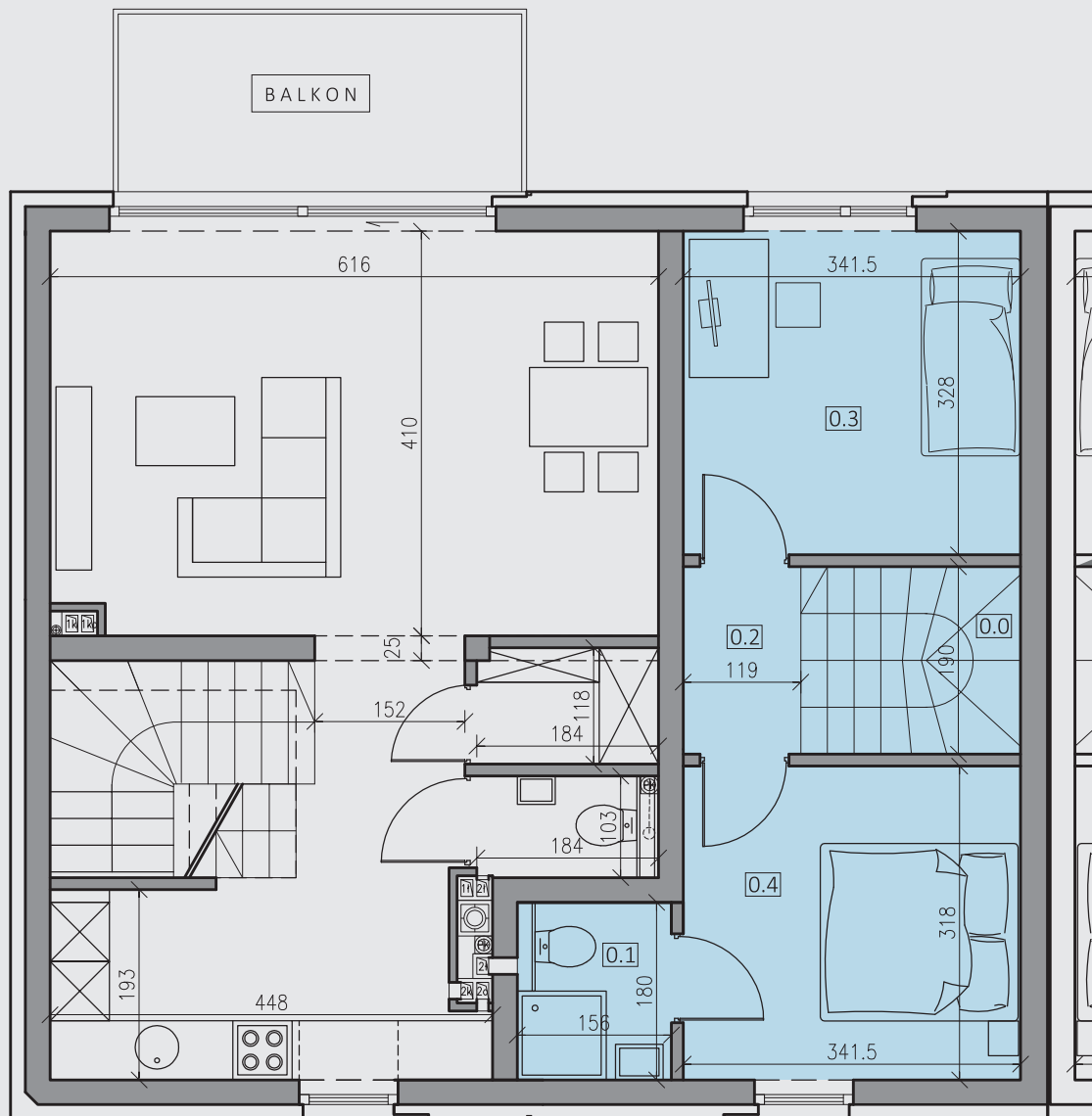


### PARTER - B.III.L5.DP

0.0	schody	2,27 m <sup>2</sup>
0.1	łazienka	8,05 m <sup>2</sup>
0.2	holl	6,60 m <sup>2</sup>
0.3	pok.dzienny z an.kuch.	39,58 m <sup>2</sup>
0.4	sypialnia	11,06 m <sup>2</sup>

pow. DP 67,56 m<sup>2</sup>

**PUM - pow. DP+GP 96,14 m<sup>2</sup>**



### PIĘTRO - B.III.L5.GP

0.0	schody	1,96 m <sup>2</sup>
0.1	łazienka	2,70 m <sup>2</sup>
0.2	holl	2,28 m <sup>2</sup>
0.3	sypialnia	10,99 m <sup>2</sup>
0.4	sypialnia	10,65 m <sup>2</sup>

pow. GP 28,58 m<sup>2</sup>

**PUM - pow. DP+GP 96,14 m<sup>2</sup>**

sprzedaż prowadzi: **LOGI development 3 sp. z o.o. sp. k.**

31-341 Kraków  
ul. Piaskowa 40/2

kontakt:

**biuro@logidevelopment.com**

tel: 501 783 053

tel: 796 377 343