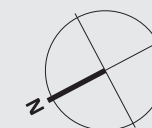
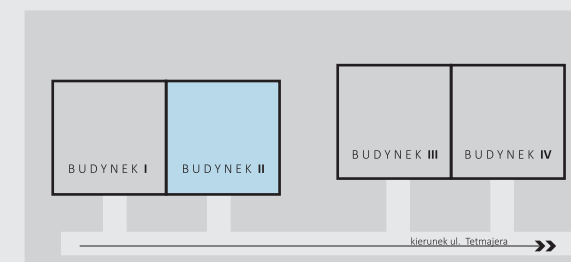
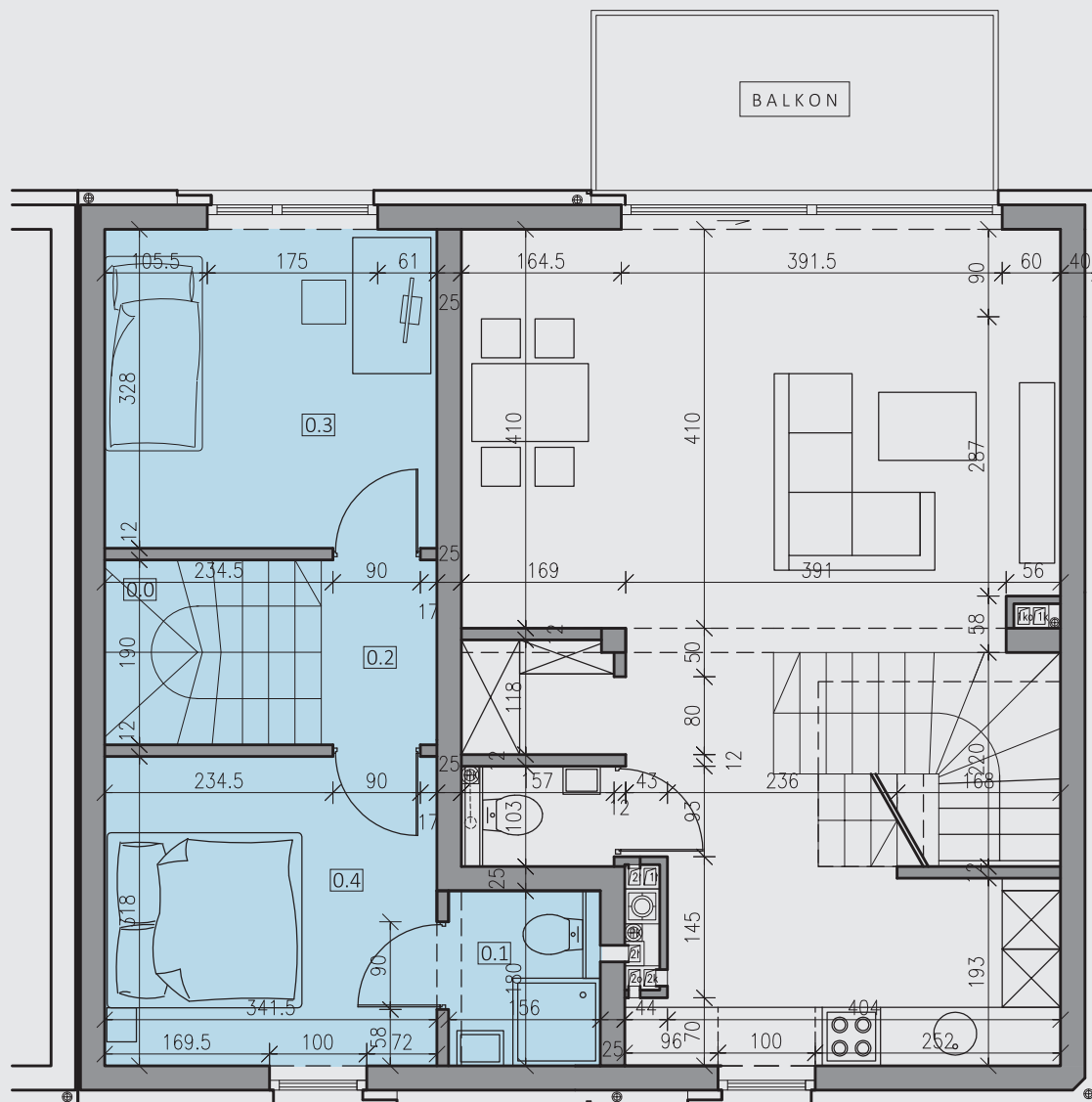


PARTER - B.II.L3.DP

0.0	schody	2,27 m ²
0.1	łazienka	8,05 m ²
0.2	holl	6,60 m ²
0.3	pok.dzienny z an.kuch.	39,58 m ²
0.4	sypialnia	11,06 m ²

pow. DP 67,56 m²

PUM - pow. DP+GP 96,14 m²



PIĘTRO - B.II.L3.GP

0.0	schody	1,96 m ²
0.1	łazienka	2,70 m ²
0.2	holl	2,28 m ²
0.3	sypialnia	10,99 m ²
0.4	sypialnia	10,65 m ²

pow. GP 28,58 m²

PUM - pow. DP+GP 96,14 m²